

Bill Whiskey Small but Mighty

Tue, 11 Jan 2022 to Sat, 19 Feb 2022

Cooee Art Redfern

COOEE ART



I

Bill Tjapaltjarri Whiskey

Rockholes near the Olgas,

Synthetic Polymer Paint on Canvas #19656

41 x 51 cm

Framed: \$ | Unframed: \$5700

PROVENANCE

Watiyawamu Art Centre, NT

Private Collection, NT

Cooee Art, NSW

Bill Whiskey Small but Mighty, January 2022, Cooee Art Redfern

Bill Whiskey did not begin painting on canvas until the last four years of his life at 84 years of age, by which time he was widely renowned as a powerful healer and keeper of sacred knowledge. His paintings, the first to depict the major Cockatoo Dreaming story and the creation of important sites throughout the country of his birth (Pirupa Alka near the Olgas - Kata Tjuta and Ayers Rock - Uluru), are imbued with authority and steeped in traditional knowledge.

During the battle between the Cockatoo and the Crow, white feathers were scattered about and the landscape became indented by the entangled combatants crashing to the ground repeatedly. Subterranean streams filled these impressions with water and a circular amphitheatre was created by the sweep of wings. Today, a large, glowing white rock signifies the fallen cockatoo, still sipping the life-giving water from the sacred pools.

In Whiskey's emblematic works, blues, yellows, and reds, are tempered by cockatoo-white, representing the wildflowers that grow in profusion after rain. In keeping with the depiction of Dreaming stories throughout the Western Desert, the mythic and numinous is inherent within the sacred geography.

COOEE ART GALLERY

A: 17 Thurlow Street, Redfern, NSW 2016. **T:** +612 9300 9233

E: info@cooeeart.com.au

W: www.coeeart.com.au

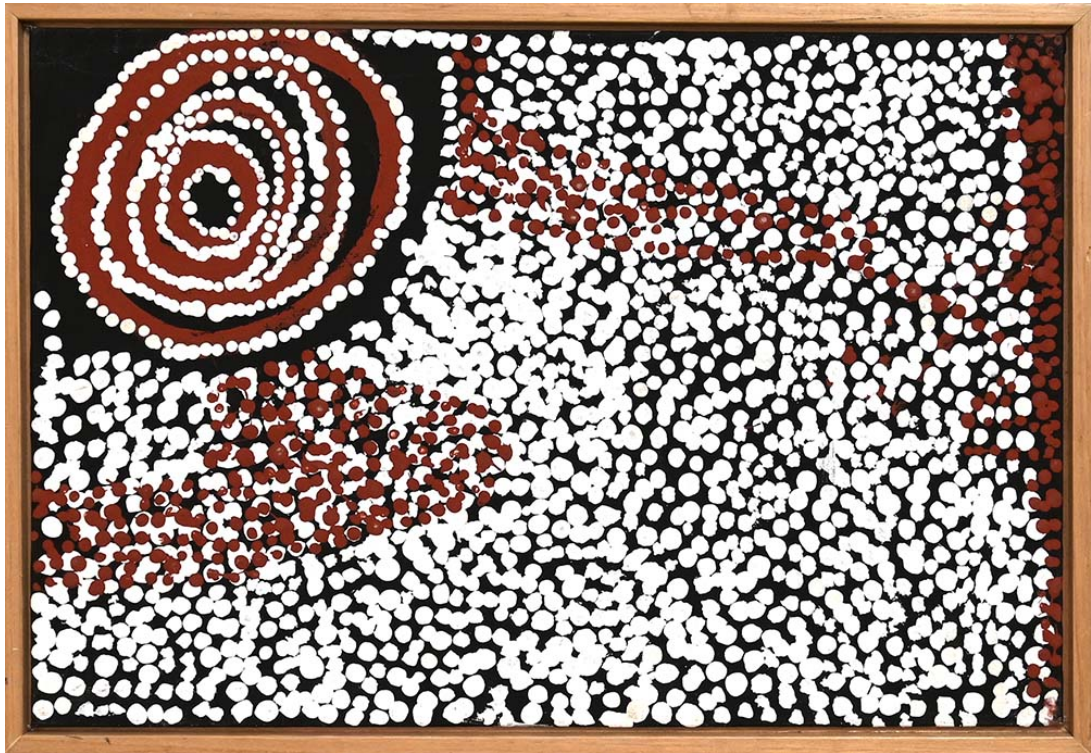
ABN: 89 614 431 319

Bill Whiskey Small but Mighty

Tue, 11 Jan 2022 to Sat, 19 Feb 2022

Cooee Art Redfern

COOEE ART



2

Bill Tjapaltjarri Whiskey

Rockholes Near the Olgas, 2007

Synthetic Polymer Paint on Canvas Board #19611

38 x 25 cm frame: 40.5 x 27.5 cm

Framed: \$ | Unframed: \$2800

PROVENANCE

Watiyawamu Art Centre, NT

Private Collection, NT

Cooee Art, NSW

Bill Whiskey, January 2022, Cooee Art Redfern

Bill Whiskey did not begin painting on canvas until the last four years of his life at 84 years of age, by which time he was widely renowned as a powerful healer and keeper of sacred knowledge. His paintings, the first to depict the major Cockatoo Dreaming story and the creation of important sites throughout the country of his birth (Pirupa Alka near the Olgas - Kata Tjuta and Ayers Rock - Uluru), are imbued with authority and steeped in traditional knowledge.

During the battle between the Cockatoo and the Crow, white feathers were scattered about and the landscape became indented by the entangled combatants crashing to the ground repeatedly. Subterranean streams filled these impressions with water and a circular amphitheatre was created by the sweep of wings. Today, a large, glowing white rock signifies the fallen cockatoo, still sipping the life-giving water from the sacred pools.

In Whiskey's emblematic works, blues, yellows, and reds, are tempered by cockatoo-white, representing the wildflowers that grow in profusion after rain. In keeping with the depiction of Dreaming stories throughout the Western Desert, the mythic and numinous is inherent within the sacred geography.

COOEE ART GALLERY

A: 17 Thurlow Street, Redfern, NSW 2016. T: +612 9300 9233

E: info@cooeeart.com.au

W: www.coeeart.com.au

ABN: 89 614 431 319

Bill Whiskey Small but Mighty

Tue, 11 Jan 2022 to Sat, 19 Feb 2022

Cooee Art Redfern

COOEE ART



3

Bill Tjapaltjarri Whiskey

Rockholes Near the Olgas, 2008

Synthetic Polymer Paint on Canvas Board #18587

25 x 38 cm

Framed: \$ | Unframed: \$2800

PROVENANCE

Watiyawamu Art Centre, NT
Private Collection, NSW

Cooee: Come Here, March 2021, Cooee Art | Redfern
Bill Whiskey, January 2022, Cooee Art Redfern
Big Names | Little Paintings, , Cooee Art Paddington

In this paintings on canvas, Rock Holes and Country Near The Olgas water places, such as Pirupa Akla are marked by sets of concentric circles, their dazzling presence representing their powerful life-giving significance, rather than their actual size. The actions of the White Cockatoo and Crow ancestors are encrypted as dotted patches that reference topographic features associated with the Dreaming.

COOEE ART GALLERY

A: 17 Thurlow Street, Redfern, NSW 2016. T: +612 9300 9233
E: info@cooeeart.com.au W: www.coeeart.com.au ABN: 89 614 431 319

Bill Whiskey Small but Mighty

Tue, 11 Jan 2022 to Sat, 19 Feb 2022

Cooee Art Redfern

COOEE ART



4

Bill Tjapaltjarri Whiskey

***Rockholes Near the Olgas*, 2007**

Synthetic Polymer Paint on Belgian Linen #19610

101 x 37.5 cm

Framed: \$ | Unframed: \$6500

PROVENANCE

Watiyawamu Art Centre, NT

Private Collection, NT

Cooee Art, NSW

Bill Whiskey, January 2022, Cooee Art Redfern

In this paintings on canvas, Rock Holes and Country Near The Olgas water places, such as Pirupa Akla are marked by sets of concentric circles, their dazzling presence representing their powerful life-giving significance, rather than their actual size. The actions of the White Cockatoo and Crow ancestors are encrypted as dotted patches that reference topographic features associated with the Dreaming.

COOEE ART GALLERY

A: 17 Thurlow Street, Redfern, NSW 2016. T: +612 9300 9233

E: info@cooeeart.com.au

W: www.coeeart.com.au

ABN: 89 614 431 319

Bill Whiskey Small but Mighty

Tue, 11 Jan 2022 to Sat, 19 Feb 2022

Cooee Art Redfern

COOEE ART



5

Bill Tjapaltjarri Whiskey

Rockholes near the Olgas, 2008

Synthetic Polymer Paint on Belgian Linen #19655

120 x 31 cm

Framed: \$ | Unframed: \$

PROVENANCE

Watiyawamu Art Centre, NT

Private Collection, NT

Cooee Art, NSW

Bill Whiskey, January 2022, Cooee Art Redfern

In this paintings on canvas, Rock Holes and Country Near The Olgas water places, such as Pirupa Akla are marked by sets of concentric circles, their dazzling presence representing their powerful life-giving significance, rather than their actual size. The actions of the White Cockatoo and Crow ancestors are encrypted as dotted patches that reference topographic features associated with the Dreaming.

COOEE ART GALLERY

A: 17 Thurlow Street, Redfern, NSW 2016. T: +612 9300 9233

E: info@cooeeart.com.au

W: www.coeeart.com.au

ABN: 89 614 431 319

Bill Whiskey Small but Mighty

Tue, 11 Jan 2022 to Sat, 19 Feb 2022

Cooee Art Redfern

COOEE ART



6

Bill Tjapaltjarri Whiskey

***Rockholes Near the Olgas*, 2008**

Synthetic Polymer Paint on Belgian Linen #19612

75 x 26 cm

Framed: \$ | Unframed: \$5000

PROVENANCE

Watiyawamu Art Centre, NT

Private Collection, NT

Cooee Art, NSW

Bill Whiskey, January 2022, Cooee Art Redfern

In this paintings on canvas, Rock Holes and Country Near The Olgas water places, such as Pirupa Akla are marked by sets of concentric circles, their dazzling presence representing their powerful life-giving significance, rather than their actual size. The actions of the White Cockatoo and Crow ancestors are encrypted as dotted patches that reference topographic features associated with the Dreaming.

COOEE ART GALLERY

A: 17 Thurlow Street, Redfern, NSW 2016. T: +612 9300 9233

E: info@cooeeart.com.au

W: www.coeeart.com.au

ABN: 89 614 431 319

Bill Whiskey Small but Mighty

Tue, 11 Jan 2022 to Sat, 19 Feb 2022

Cooee Art Redfern

COOEE ART



7

Bill Tjapaltjarri Whiskey

Untitled (Rockholes Near the Olgas), 2008
Synthetic Polymer Paint on Board #19601
50 x 25 cm
Framed: \$ | Unframed: \$

PROVENANCE
Watiyawamu Art Centre, NT
Private Collection, NT
Cooee Art, NSW

Bill Whiskey, January 2022, Cooee Art Redfern

In this paintings on canvas, Rock Holes and Country Near The Olgas water places, such as Pirupa Akla are marked by sets of concentric circles, their dazzling presence representing their powerful life-giving significance, rather than their actual size. The actions of the White Cockatoo and Crow ancestors are encrypted as dotted patches that reference topographic features associated with the Dreaming.

COOEE ART GALLERY

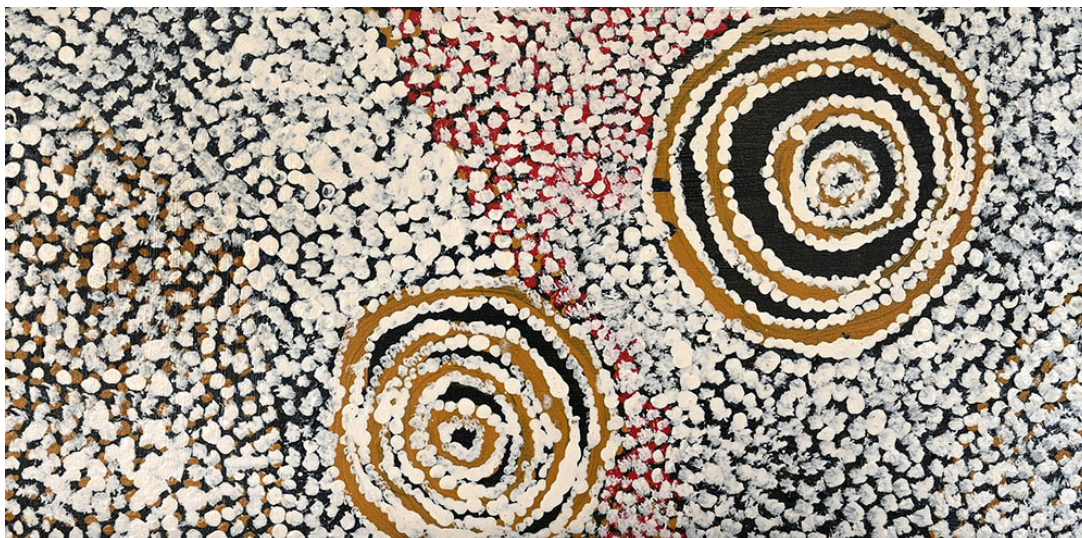
A: 17 Thurlow Street, Redfern, NSW 2016. T: +612 9300 9233
E: info@cooeeart.com.au W: www.coeeart.com.au ABN: 89 614 431 319

Bill Whiskey Small but Mighty

Tue, 11 Jan 2022 to Sat, 19 Feb 2022

Cooee Art Redfern

COOEE ART



8

Bill Tjapaltjarri Whiskey

Untitled (Rockholes Near the Olgas), 2008

Synthetic Polymer Paint on Board #19605

50 x 25 cm

Framed: \$ | Unframed: \$3900

PROVENANCE

Watiyawamu Art Centre, NT

Private Collection, NT

Cooee Art, NSW

Bill Whiskey, January 2022, Cooee Art Redfern

In this paintings on canvas, Rock Holes and Country Near The Olgas water places, such as Pirupa Akla are marked by sets of concentric circles, their dazzling presence representing their powerful life-giving significance, rather than their actual size. The actions of the White Cockatoo and Crow ancestors are encrypted as dotted patches that reference topographic features associated with the Dreaming.

COOEE ART GALLERY

A: 17 Thurlow Street, Redfern, NSW 2016. T: +612 9300 9233

E: info@cooeeart.com.au

W: www.coeeart.com.au

ABN: 89 614 431 319

Bill Whiskey Small but Mighty

Tue, 11 Jan 2022 to Sat, 19 Feb 2022

Cooee Art Redfern

COOEE ART



9

Bill Tjapaltjarri Whiskey

Untitled (Rockholes Near the Olgas), 2008
Synthetic Polymer Paint on Board #19608
50 x 25 cm
Framed: \$ | Unframed: \$3900

PROVENANCE
Watiyawamu Art Centre, NT
Private Collection, NT
Cooee Art, NSW

Bill Whiskey, January 2022, Cooee Art Redfern

In this paintings on canvas, Rock Holes and Country Near The Olgas water places, such as Pirupa Akla are marked by sets of concentric circles, their dazzling presence representing their powerful life-giving significance, rather than their actual size. The actions of the White Cockatoo and Crow ancestors are encrypted as dotted patches that reference topographic features associated with the Dreaming.

COOEE ART GALLERY

A: 17 Thurlow Street, Redfern, NSW 2016. T: +612 9300 9233
E: info@cooeeart.com.au W: www.coeeart.com.au ABN: 89 614 431 319

Bill Whiskey Small but Mighty

Tue, 11 Jan 2022 to Sat, 19 Feb 2022

Cooee Art Redfern

COOEE ART



10

Bill Tjapaltjarri Whiskey

Untitled (Rockholes Near the Olgas), 2008
Synthetic Polymer Paint on Board #19609
50 x 25 cm
Framed: \$ | Unframed: \$3900

PROVENANCE
Watiyawamu Art Centre, NT
Private Collection, NT
Cooee Art, NSW

Bill Whiskey, January 2022, Cooee Art Redfern

In this paintings on canvas, Rock Holes and Country Near The Olgas water places, such as Pirupa Akla are marked by sets of concentric circles, their dazzling presence representing their powerful life-giving significance, rather than their actual size. The actions of the White Cockatoo and Crow ancestors are encrypted as dotted patches that reference topographic features associated with the Dreaming.

COOEE ART GALLERY

A: 17 Thurlow Street, Redfern, NSW 2016. T: +612 9300 9233
E: info@cooeeart.com.au W: www.coeeart.com.au ABN: 89 614 431 319

Bill Whiskey Small but Mighty

Tue, 11 Jan 2022 to Sat, 19 Feb 2022

Cooee Art Redfern

COOEE ART



11

Bill Tjapaltjarri Whiskey

Untitled (Rockholes Near the Olgas), 2008
Synthetic Polymer Paint on Board #19602
50 x 25 cm
Framed: \$ | Unframed: \$3900

PROVENANCE
Watiyawamu Art Centre, NT
Private Collection, NT
Cooee Art, NSW

Bill Whiskey, January 2022, Cooee Art Redfern

In this paintings on canvas, Rock Holes and Country Near The Olgas water places, such as Pirupa Akla are marked by sets of concentric circles, their dazzling presence representing their powerful life-giving significance, rather than their actual size. The actions of the White Cockatoo and Crow ancestors are encrypted as dotted patches that reference topographic features associated with the Dreaming.

COOEE ART GALLERY

A: 17 Thurlow Street, Redfern, NSW 2016. T: +612 9300 9233
E: info@cooeeart.com.au W: www.coeeart.com.au ABN: 89 614 431 319